

Security Policies for Large  
Systems  
CS 239  
Security for Networks and  
System Software  
May 7, 2002

CS 239, Spring 2002

Page 1

## Security Policies

- Who is allowed to do what when
- And what happens if they do something else
- And who's responsible for making sure that's done, if needed
- And what to do if something goes wrong

CS 239, Spring 2002

Page 2

## More Formally,

- A security policy is a written statement that describes an organization's approach to securing its computer assets
- Useful for many purposes

CS 239, Spring 2002

Page 3

## What Should a Security Policy Cover?

- Who are the legitimate users?
- What are the assets being protected?
- Who has what responsibilities for security?
- What is appropriate use of the system?
- What are the consequences of inappropriate use?

CS 239, Spring 2002

Page 4

## Getting Down to Brass Tacks

- The UCLA Computer Science Department doesn't have a formal security policy
- I think it should
- What should it be?

CS 239, Spring 2002

Page 5

## Some Details on the Department Facility

- Meant to support CS department needs
  - Research
  - Education
  - Administration
- No service provided to other departments

CS 239, Spring 2002

Page 6

## Types of Users

- Faculty and lecturers (58)
- Staff (26)
- Graduate students (343)
- Guests (21)
- Nobody else should have access
  - Except to web sites

CS 239, Spring 2002

Page 7

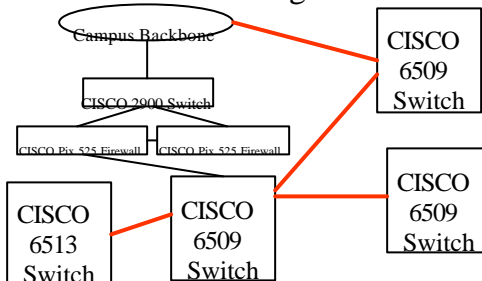
## Machines on the Network

- Sun machines – 220
- Intel-based PCs – 450
- Macintoshes – 30
- HP, SGI, Digital workstations – 21
- PDAs – 50
- Several printers
- Scanner

CS 239, Spring 2002

Page 8

## Network Configuration



CS 239, Spring 2002

Page 9

## Our Wireless Network

- 802.11 equipment
- Covers essentially all of the 3d and 4<sup>th</sup> floors of Boelter Hall
  - With a little “spill” elsewhere
- Currently uses both static IP addresses and DHCP
  - DHCP use requires registered HW address for wireless card

CS 239, Spring 2002

Page 10

## What Kind of Data Do We Store?

- Lots of research data
- Some class-related data
- A fair amount of administrative data
  - Much critical stuff in other systems
  - But things like the CS web site are under our control

CS 239, Spring 2002

Page 11

## Our Staff

- Pete Follett
- Steve Sakamoto
- Peter Schultze
- Charlie Fritzius
- Often part-time student helpers
- I’m the faculty contact for the facility

CS 239, Spring 2002

Page 12

What Are We Protecting?

CS 239, Spring 2002

Page 13

What Are Our Priorities?

CS 239, Spring 2002

Page 14

What Are the Users' Security Responsibilities?

CS 239, Spring 2002

Page 15

What Is Appropriate Use?

CS 239, Spring 2002

Page 16

What Are the Consequences of Inappropriate Use?

CS 239, Spring 2002

Page 17

A Special Question for Us

- What about the labs that run their own networks and systems?

CS 239, Spring 2002

Page 18